



CTL ATLANTIS



Bezalel
DESIGNS

COMPANY PROFILE

Your Dream Home
Awaits you.

Table Of Content

About Us	03
Our Featured Properties	04
Disclaimer	05
Ongoing Projects	06
The Square	07
Bezalel Living	13
Past Projects	18
The Atlantis I	19
The Atlantis II	21
The Atlantis III	25
The Atlantis IV	29
Client Portfolio	39
Ritz Court	40
Rivera Court	41
Caregivers Institute	41
Maranatha Villas	42
Single Projects Pinnock Beach Estate	43
Contact Us	44

About Us

A Tale of Vision and Renewal: The Birth of CTL Atlantis

In the bustling city of Lagos, Nigeria, a seasoned real estate visionary, Jeremy Erundu, had spent over a decade sculpting real estate dreams with Carter-Tech Ltd. Co-founding the company had been his life's work, but in 2023, he felt a stirring within—a call to embark on a new journey to diversify into a new emerging area of real estate development.

Thus, **CTL Atlantis** was born, not just as a real estate company, but as a collaboration-driven enterprise. With Mr. Jeremy Erundu at the helm as Founder and CEO, and Mrs. Goodnews Erundu as Deputy CEO and Creative Director of **Bezalel Designs**, their combined expertise bridges the gap between property development and the art of interior design. This partnership ensures that every project tells a story of family, creativity, and excellence.

The visionary duo **Jeremy and Goodnews Erundu** have redefined what it means to build a legacy, one steeped in innovation and family values.

CTL Atlantis, now fully incorporated in both the United States and Nigeria, stands as a beacon of possibility, blending property development, interior design innovation and community-focused solutions.

Together, **CTL Atlantis** and **Bezalel Designs** deliver spaces that are not just functional but inspiring—homes where dreams flourish and communities thrive. The Erundus stand as a testament to the enduring spirit of renewal in the world of real estate. With every project, the duo and their team strive to create not just houses, but homes—places where dreams take root and futures blossom.



Our Featured Properties

CTL Atlantis is proud to present a curated selection of our finest creations—homes that redefine the art of living and elevate the concept of luxury to new heights.



RESIDENTIAL



COMMERCIAL



JOINT VENTURES



Disclaimer

The information contained in this profile document is provided for general informational purposes only. While every effort has been made to ensure the accuracy and completeness of the information presented, CTL Atlantis makes no representations or warranties of any kind, express or implied, about the accuracy, reliability, suitability, or availability of the information, products, services, or related graphics contained in this document for any purpose.

All information provided in this profile document is subject to change without notice. CTL Atlantis reserves the right to modify, update, or remove any content herein at any time without prior notice.

Any reliance you place on the information presented in this profile document is strictly at your own risk. CTL Atlantis shall not be liable for any loss or damage, including but not limited to indirect or consequential loss or damage, arising from the use of, or inability to use, the information contained in this document.





ONGOING PROJECTS

The Square

The Square by CTL Atlantis is a groundbreaking green building that blends sustainability with modern innovation. Designed to reduce its environmental impact while enhancing everyday living, The Square uses eco-friendly materials, smart energy systems, and natural elements to create a space that is both efficient and inspiring. From smart ventilation to water-saving features and sunlit interiors, every detail is built to support a healthier, more productive lifestyle.

More than just a building, The Square represents a new standard for real estate development in Nigeria — one that reflects CTL Atlantis' commitment to smart, future-ready communities. Whether for living, working, or collaborating, The Square offers flexible spaces within a beautifully designed environment that puts people and the planet first.





THE SQUARE



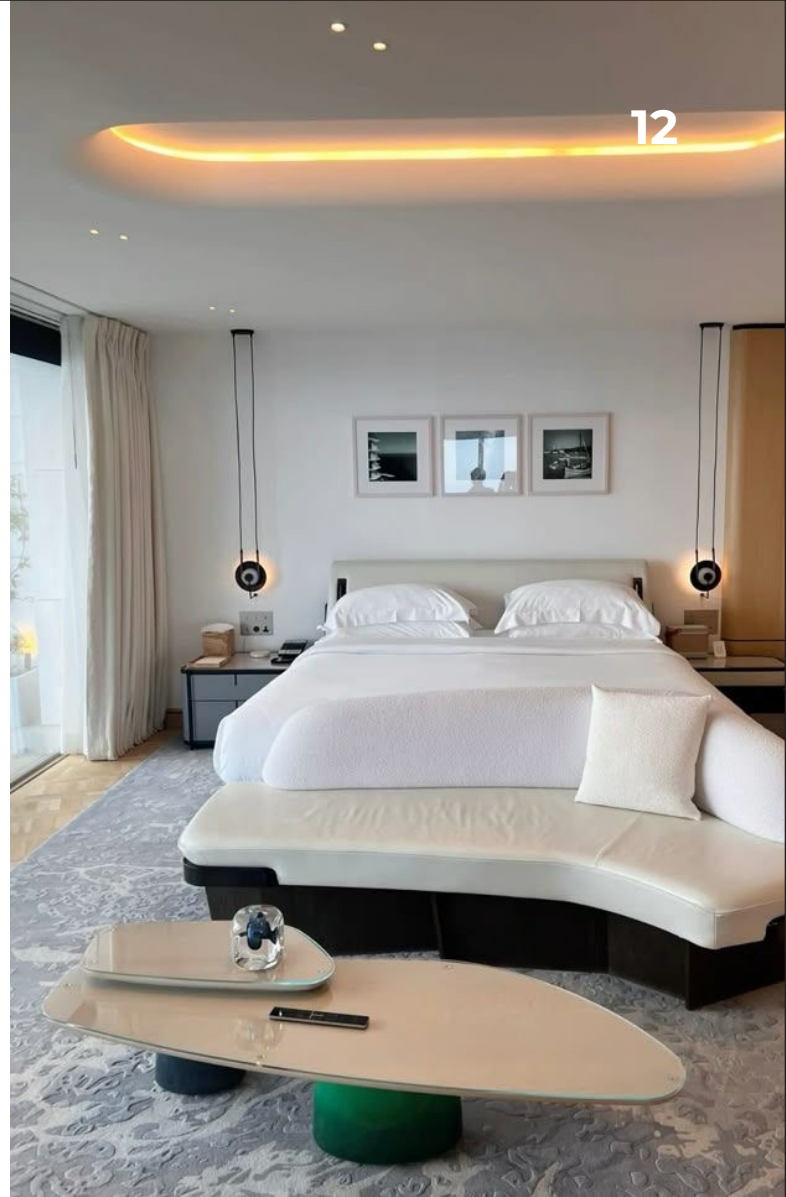




THE SQUARE



12

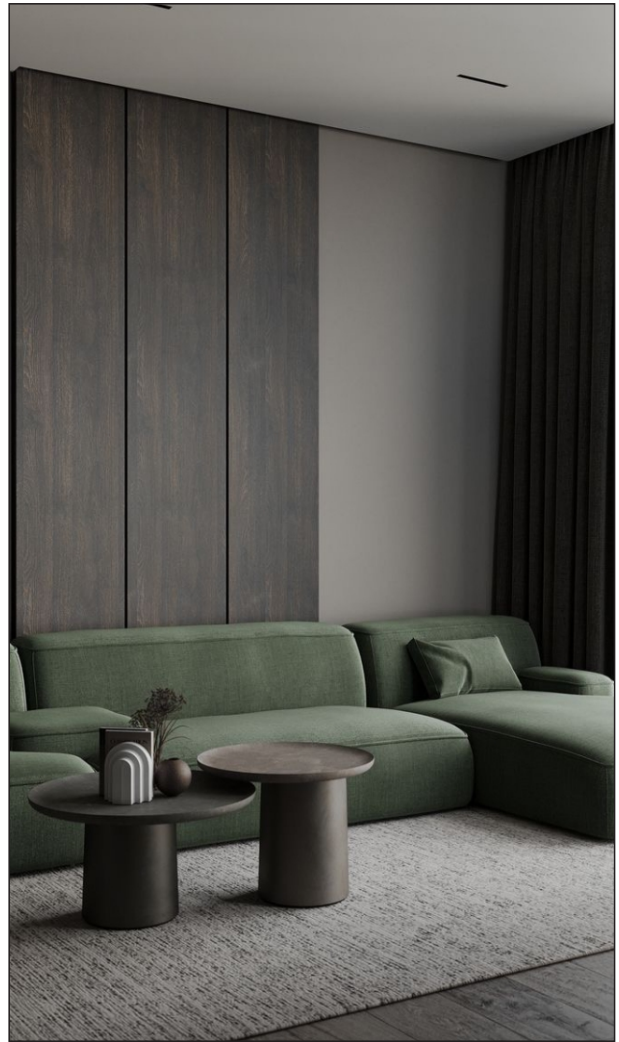


Bezael Living

Introducing Bezael Living by CTL Atlantis — an exclusive collection of 16 thoughtfully designed 1- and 2-bedroom hotel-style apartments, blending luxury, comfort, and innovation. Nestled in a serene yet central location, each unit is crafted with a modern interior aesthetic and equipped with smart home technology for seamless living. Residents will enjoy premium amenities including 24-hour concierge service, a pristine swimming pool, and secure parking — all curated to deliver a lifestyle of ease and elegance. Bezael Living is more than just a residence; it's a refined experience where everyday living feels like a staycation.







BEZALEL LIVING







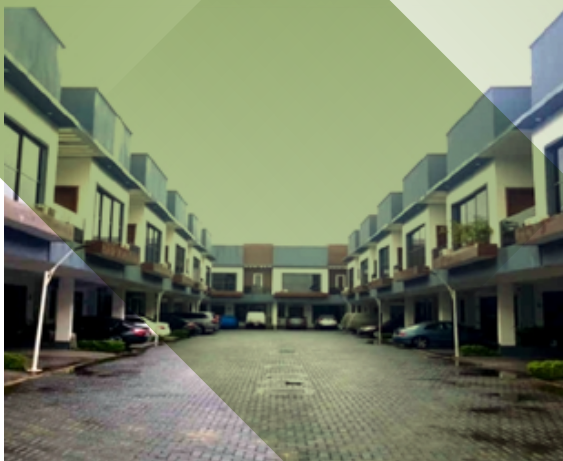
PAST PROJECTS

Atlantis I

Introducing The Atlantis Estate by CTL Atlantis—a meticulously crafted residential haven that epitomizes the essence of luxury living. Nestled in a serene enclave, The Atlantis Estate boasts 18 exquisite units, each offering four bedrooms of unparalleled comfort and sophistication.

Designed to harmonize with its natural surroundings, this exclusive community offers a retreat from the hustle and bustle of city life while maintaining convenient access to urban amenities.

With a promise of quality and efficiency, CTL Atlantis delivered this remarkable estate within a mere 18 months—setting a new standard for real estate development in Nigeria.





Atlantis II

Welcome to Atlantis II by CTL Atlantis—**50 units** of refined living, offering spacious **4-bedroom** semi-detached duplexes, elegant 4-bedroom terraces, and cozy **3-bedroom flats**.





Atlantis II







Atlantis III

Welcome to Atlantis III by CTL Atlantis — a premium residential development offering 73 units of modern luxury living in the heart of Lekki, Lagos. Designed for those who appreciate the finer things in life, Atlantis III redefines comfort, style, and convenience.

Each apartment features a fully fitted kitchen, en-suite bedrooms, high ceilings, and a private or terrace balcony that invites natural light and fresh air. Residents enjoy access to a well-equipped gymnasium, serene recreational areas, and a sparkling swimming pool all supported by 24/7 security, full-service facility management, and uninterrupted power supply. With 3 to 4 dedicated parking slots per apartment, Atlantis III is where elegance meets everyday ease — a true sanctuary in the city.









Atlantis IV

Introducing Atlantis IV by CTL Atlantis — 53 units of pure apartment luxury in the heart of Lagos. Enjoy spacious en-suite bedrooms, high ceilings, and private balconies for elevated comfort. Unwind by the swimming pool, stay active in the gym, or relax in serene recreational areas. Each apartment features a sleek fitted kitchen and generous living spaces. With 24/7 security, constant power, and expert facility management, peace of mind is guaranteed. Atlantis IV is where refined living meets everyday ease.



















ATLANTIS IV





CTL ATLANTIS

Bezalel
DESIGNS

CLIENT

Portfolio



CTL ATLANTIS



Bezalel
DESIGNS

40

RITZ COURT

IKATE, LEKKI

12 UNITS MIXED
DWELLING
WITH ROOFTOP
TERRACE



COMPLETED





CTL ATLANTIS



Bezalel
DESIGNS

41

18 UNITS MIXED
DWELLING

RIVIERA COURT



COMPLETED



CARE GIVERS INSTITUTE



COMPLETED



MARANATHA VILLAS - IKOTA

✓ COMPLETED



PINNOCK BEACH ESTATE

PRIVATE HOME

✓ COMPLETED





CTL **ATLANTIS**



Bezalel
DESIGNS

CTL Atlantis LLC

6510, Abrams Rd, Suite 650,
Dallas TX, USA 75231
+19452179921

CTL Atlantis LTD

The Atlantis 3, Bankole
Lukmon Street, Lekki, Lagos.

0700 225 5285

www.ctlatlantis.com



@ctlatlantis



@bezaleldesigns